

EPX50-LT



Cold Weather, Low-Modulus, Epoxy Urethane Co-Polymer

Cold temperature season extender

Cure Time
@ 30-34 °F



ASTM
D1640

3.75 hrs

Compressive Strength
24 hrs with sand



ASTM
C579

>8,000 psi

Tensile Elongation
@ 40 °F



ASTM
D638

20-30%

Description

EPX50-LT (Low Temperature) is a moisture-insensitive, low-modulus, epoxy urethane co-polymer overlay resin, designed to be applied in late season cold conditions down to 30 °F and rapid return to service applications.

Advantages & Features

- Epoxy urethane technology
- Excellent bond strength
- Moisture insensitive
- May be installed as low as 30 °F
- Nonflammable
- Easy to mix - 1:1 ratio
- Part A and Part B - Color coded pails
- >20% elongation at 40 °F
- No primer required
- Designed for automated pump or hand mix application

Applications

- Bridge decks
- Elevated slabs
- Parking decks
- Roadway high-friction surface applications
- Patching mortar
- Bus and bicycle lanes

Compliances & Certifications

- ASTM C881*/AASHTO M235* Type III Grade 1 & 2 Class A, B & C (with exceptions)
- AASHTO T277 (0 coulombs)
- VOC compliant
- BABA compliant
- Meets >1,000 psi in 3 hours requirement

Material Properties

- **Coverage:**
 - Course 1:
1 gal/40 ft² epoxy; 10 lbs./yd² aggregate
 - Course 2:
1 gal/20 ft² epoxy; 14 lbs./yd² aggregate
 - High Friction Surface Treatment:
1 gal/26-32 ft² epoxy; 18+ lbs./yd² aggregate
- **Gel time (75 °F):** 10-15 minutes
- **Cure rate (30 °F):** ~3.75 hours
- **Percent solids:** 100%
- **Bond strength (14-day cure):** >2,500 psi
- **Compressive modulus (neat):** <130,000 psi
- **Tensile strength (40 °F):** >2,000 psi
- **Shelf life:** 2 years in original, unopened containers
- **Color:** Green tint, when mixed
- **Storage:** 50 °F to 95 °F in dry and dark conditions

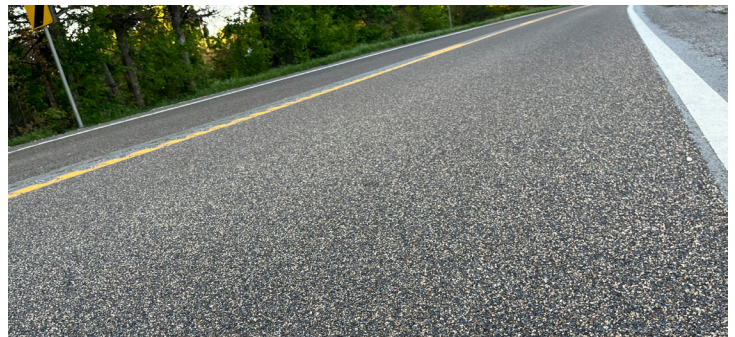
Packaging

- 2-gallon unit
- 10-gallon unit
- 110-gallon unit
- 500-gallon unit

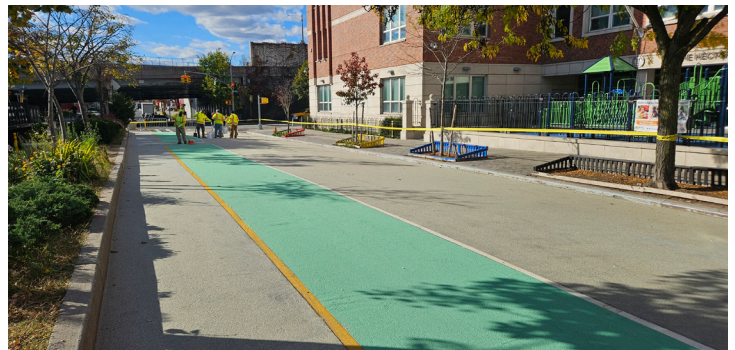
Typical Applications



Bridge deck overlay



High-friction surface treatment (roadway)



High-friction surface treatment (bus/bike lane)

To speak with our technical staff, please call

505-217-2121

echem

 **Meridian**
Infrastructure