

August 12, 2024

Understanding wet set, semi-wet and dry set adhesive applications

At Taylor Adhesives, we make adhesives that can be used for a vast number of flooring products in all categories. Even though these flooring products may look similar, they may have very different requirements when it comes to installation. For this reason, we always defer to the flooring manufacturers installation requirements when an installer is using one of our adhesives. Some of the most misunderstood requirements for resilient flooring installations is the requirements for wet-set, semi-wet set or dry set installation.

Wet Set:

- A wet set application will provide nearly 100% transfer of the adhesive to the back of the flooring.
- This installation method can only be performed over porous substrates with water-based adhesives.
- Slippage is common with a wet set installation, so tape strapping is recommended to prevent movement.
- It will also provide a tenacious bond of the flooring to the substrate.
- Since the flooring will need to be placed into wet adhesive this method will reduce productivity but will provide a superior bond.

Semi-Wet:

- A semi-wet installation will provide at least 50% adhesive transfer on the trowel ridges giving it a more aggressive bond than a dry set.
- Since the adhesive is beginning to dry between the trowel ridges slippage is less common and tape strapping may not be needed.
- This installation method can only be performed over porous substrates with water-based adhesives.
- Semi-wet will provide a more aggressive bond of the flooring to the substrate than a dry set with the same adhesive.
- Since the flooring will need to be placed into the adhesive as a semi-wet this method will limit productivity.

Dry Set:

- Dry set installations allow the installer to spread the adhesive in a larger area and place the flooring into the tacky adhesive.
- This method is generally easier than wet set or semi-wet but will not provide as aggressive of a bond as semi-wet or wet set.
- There will be very little transfer to the back of the flooring.
- This installation can be performed over both porous and non-porous substrates.
- Tape strapping is not needed with this installation method.
- Dry set applications are preferred by installers but may not be suitable for all flooring products in every application.

Page 1 of 2

GScheidker@meridianadhesives.com
407-924-5054

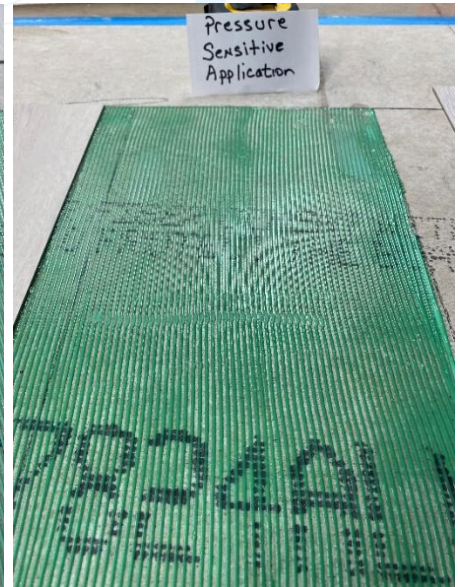
800 College Drive
Dalton, GA 30720



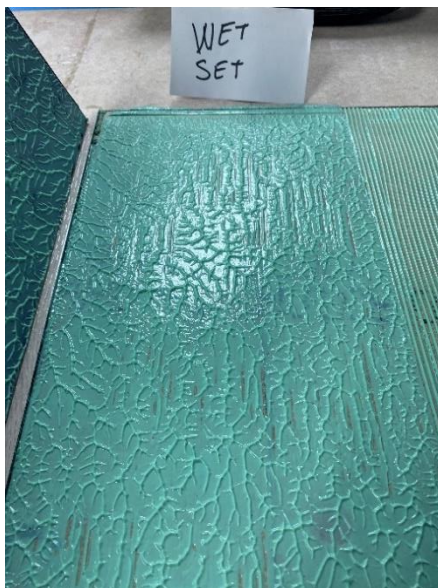
Wet set



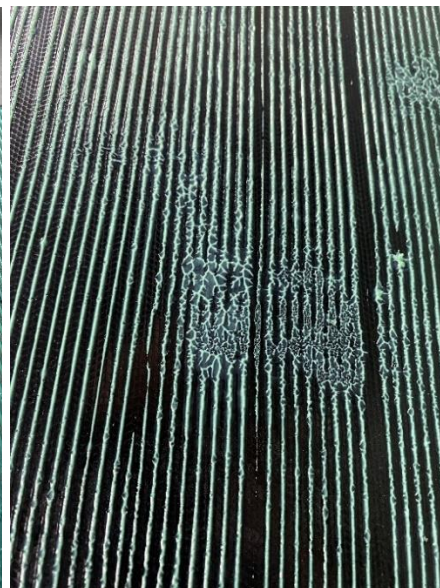
Semi-wet



Dry set PSA



Wet set transfer



Semi-wet transfer to plank



Dry set transfer to plank

Please follow the flooring manufacturer's installation guidelines regarding trowel selection, installation method, substrate preparation, moisture limitations, acclimation, environmental conditions and any other restrictions and limitations.