



EPX50-SC



Low-Modulus, Epoxy Urethane Co-Polymer

Most widely approved & versatile

Cure Time
@ 75 °F



ASTM
D1640

≤3 hrs

Compressive Strength
24 hrs with sand



ASTM
C579

>5,000 psi

Tensile Elongation
@ 75 °F



ASTM
D638

50-60%

Description

EPX50-SC (Standard Cure) is a moisture-insensitive, low-modulus epoxy urethane designed for reliable performance in concrete preservation. Applied at 1/4"-3/8", it delivers a durable, chemical-resistant, waterproof surface for bridge decks, elevated slabs, and other critical structures. Its extended working time in warm conditions improves placement, control, and installation reliability.

Advantages & Features

- Epoxy urethane technology
- Excellent bond strength
- Moisture insensitive
- Nonflammable
- Easy to mix - 1:1 ratio, color coded
- No primer required
- Designed for plural component pump or hand mix applications

Applications

- Bridge decks
- Elevated slabs
- Parking decks
- Roadway high-friction surface applications
- Patching mortar

Compliances & Certifications

- AASHTO M235 / ASTM C881 Type III Class B & C
- AASHTO M353 & M354
- VOC compliant
- BABA compliant
- Meets >1,000 psi in 3 hours requirement

EPX50-SC
&
EPX50-RC
share the
same universal
resin.

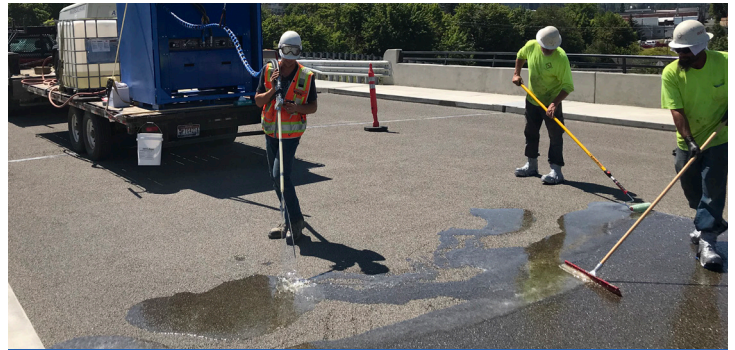
Material Properties

- **Coverage:**
 - Course 1:
1 gal/40 ft² epoxy; 10 lbs./yd² aggregate
 - Course 2:
1 gal/20 ft² epoxy; 14 lbs./yd² aggregate
- **Gel time (75 °F):** 15-25 minutes
- **Cure rate (75 °F):** <3 hours
- **Percent solids:** 100%
- **Bond strength (14-day cure):** >2,000 psi
- **Compressive modulus (neat):** <130,000 psi
- **Tensile strength (75 °F):** >3,000 psi
- **Shelf life:** 2 years in original, unopened containers
- **Color:** Green tint, when mixed
- **Storage:** 50 °F to 95 °F in dry and dark conditions

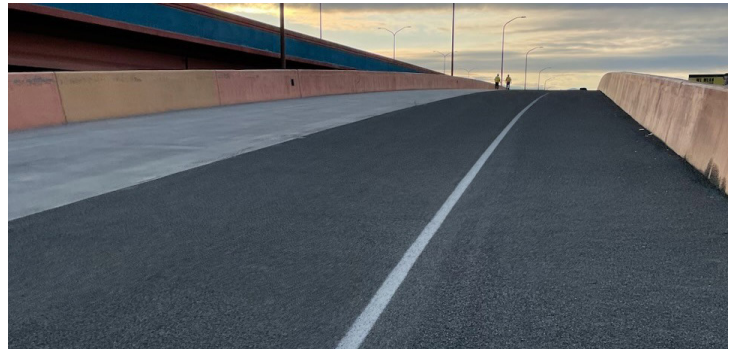
Packaging

- 2-gallon unit
- 10-gallon unit
- 110-gallon unit
- 500-gallon unit

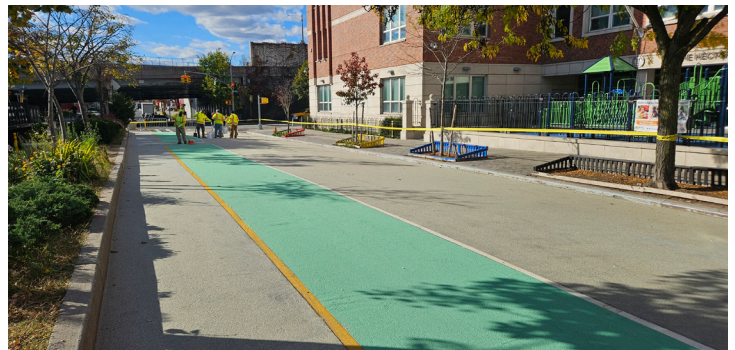
Typical Applications



Bridge deck overlay



High-friction surface treatment (roadway)



High-friction surface treatment (bus/bike lane)

To speak with our technical staff, please call

505-217-2121

echem

 **Meridian**
Infrastructure